

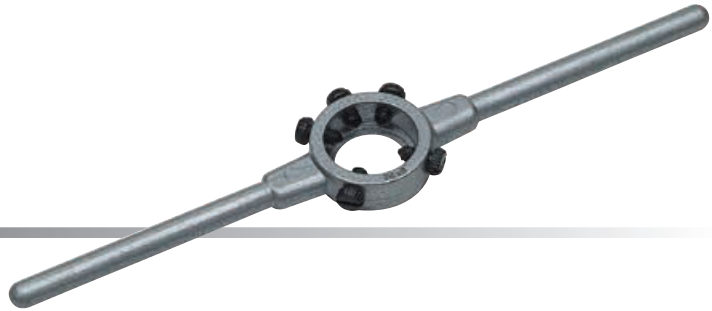



Schneideisenhalter

DIN 225 (DIN EN 22568), Zinkdruckguss

Porte-filières

DIN 225 (DIN EN 22568), en zamac



Ø x mm	für runde Schneideisen DIN 223 (DIN EN 22568)		Länge mm	Gewicht kg		Art.-No.	
16 x 5	M	1-2.6	BSW 1/16-3/32	160	0,050	5	15001
20 x 5	M	3-4	BSW 1/8-5/32	200	0,065	5	15002
20 x 7	M	4.5-6	BSW 3/16-1/4	200	0,065	5	15003
25 x 9	M	7-9	BSW 5/16	224	0,105	5	15004
30 x 11	M	10-11	BSW 3/8-7/16	280	0,190	5	15005
38 x 10	Mf	12-15	G 1/4	315	0,340	5	15006
38 x 14	M	12-14	BSW 1/2-9/16	315	0,340	5	15007
45 x 14	Mf	16-20	G 3/8-1/2	450	0,650	1	15008
45 x 18	M	16-20	BSW 5/8-13/16	450	0,650	1	15009
55 x 16	Mf	22-26	G 5/8-3/4	560	0,900	1	15010
55 x 22	M	22-24	BSW 7/8-1"	560	0,900	1	15011
65 x 18	Mf	27-36	G 7/8-1"	630	1,400	1	15012
65 x 25	M	27-36	BSW 1.1/8-1.3/8	630	1,400	1	15013

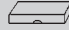
Schneideisenhalter

DIN 225 (DIN EN 22568), [STAHL-Ausführung](#)

Porte-filières

DIN 225 (DIN EN 22568), [en acier](#)



Ø x mm	für runde Schneideisen DIN 223 (DIN EN 22568)		Länge mm	Gewicht kg		Art.-No.	
45 x 18	M	16-20	BSW 5/8-13/16	450	0,650	1	15209
55 x 22	M	22-24	BSW 7/8-1"	560	0,900	1	15211
65 x 25	M	27-36	BSW 1.1/8-1.3/8	630	1,400	1	15213
75 x 20	Mf	38-42	G 1.1/8-1.1/4	800	2,250	1	15214
75 x 30	M	38-42	BSW 1.1/2-1.5/8	800	2,100	1	15215
90 x 22	Mf	45-52	G 1.3/8-1.5/8	900	3,200	1	15216
90 x 36	M	45-52	BSW 1.3/4-2"	900	3,000	1	15217
105 x 22	Mf	54-63	G 1.3/4-2"	975	3,500	1	15218
105 x 36	M	54-63	BSW 2.1/4"-2.1/2"	975	3,500	1	15219
120 x 22	Mf	64-71	G 2.1/4-2.3/4	956	3,170	1	15220
120 x 36	M	64-71	BSW 2.3/4"	956	3,910	1	15221
130 x 25			G 3"	966	3,505	1	15222
130 x 36				966	4,025	1	15223
140 x 22				976	3,620	1	15224
150 x 25			G 3.1/2"	986	3,950	1	15226
160 x 25			G 4"	996	4,115	1	15228